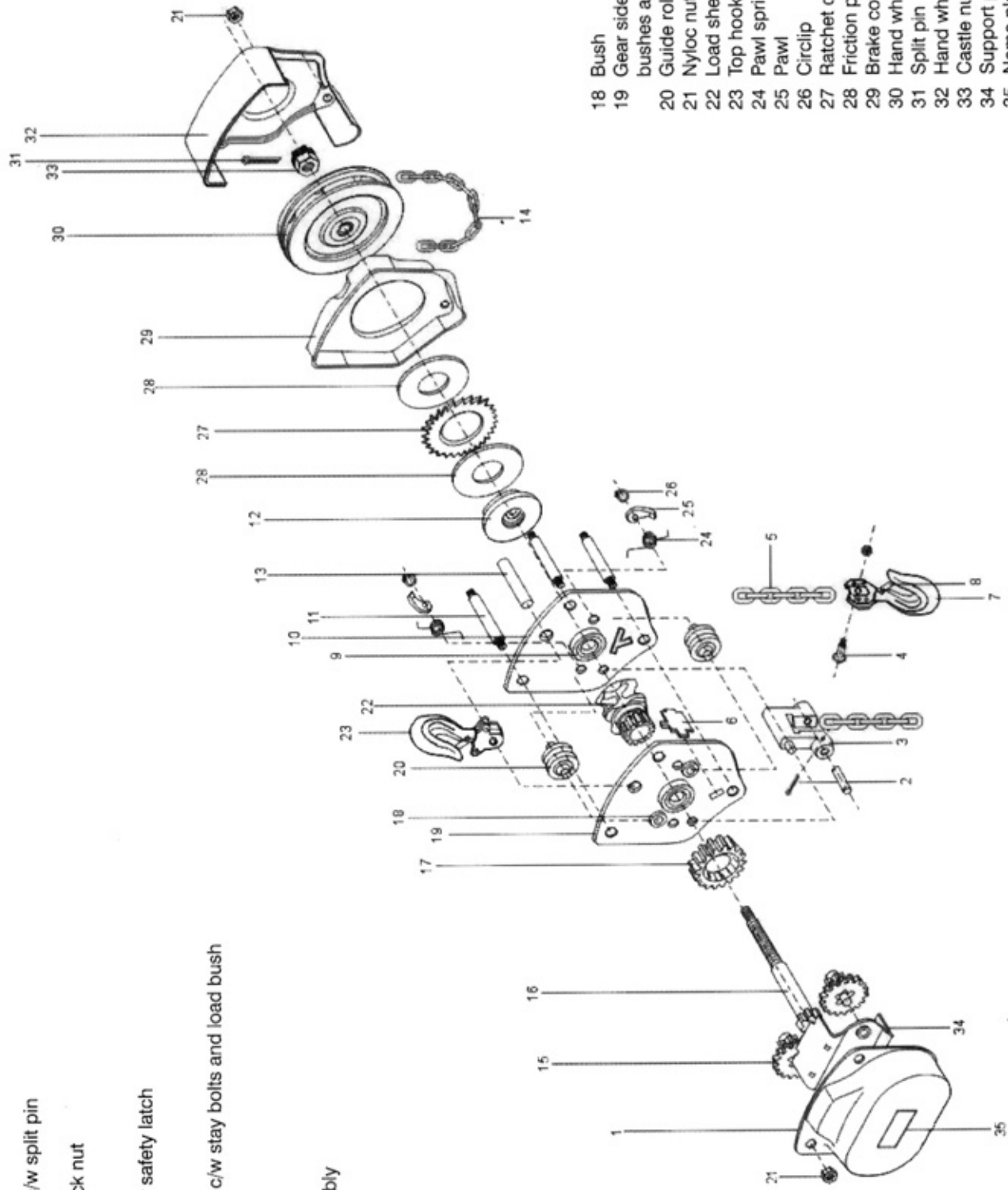


FASTLIFT CHAIN BLOCKS - MKII

- 1 Gear cover
- 2 End anchor pin c/w split pin
- 3 End anchor
- 4 Chain pin and lock nut
- 5 Load chain
- 6 Stripper
- 7 Bottom hook c/w safety latch
- 8 Safety latch
- 9 Bearing
- 10 Wheel side plate c/w stay bolts and load bush
- 11 Stay bolt
- 12 Hub
- 13 Top hook pin
- 14 Hand chain
- 15 Disc gear assembly
- 16 Pinion shaft
- 17 Splined gear



- 18 Bush
- 19 Gear side plate c/w pinion bushes and load bush
- 20 Guide roller
- 21 Nyloc nut
- 22 Load sheave
- 23 Top hook c/w safety latch
- 24 Pawl spring
- 25 Pawl
- 26 Circlip
- 27 Ratchet disc
- 28 Friction plate
- 29 Brake cover
- 30 Hand wheel
- 31 Split pin
- 32 Hand wheel cover
- 33 Castle nut
- 34 Support plate
- 35 Name plate c/w rivets