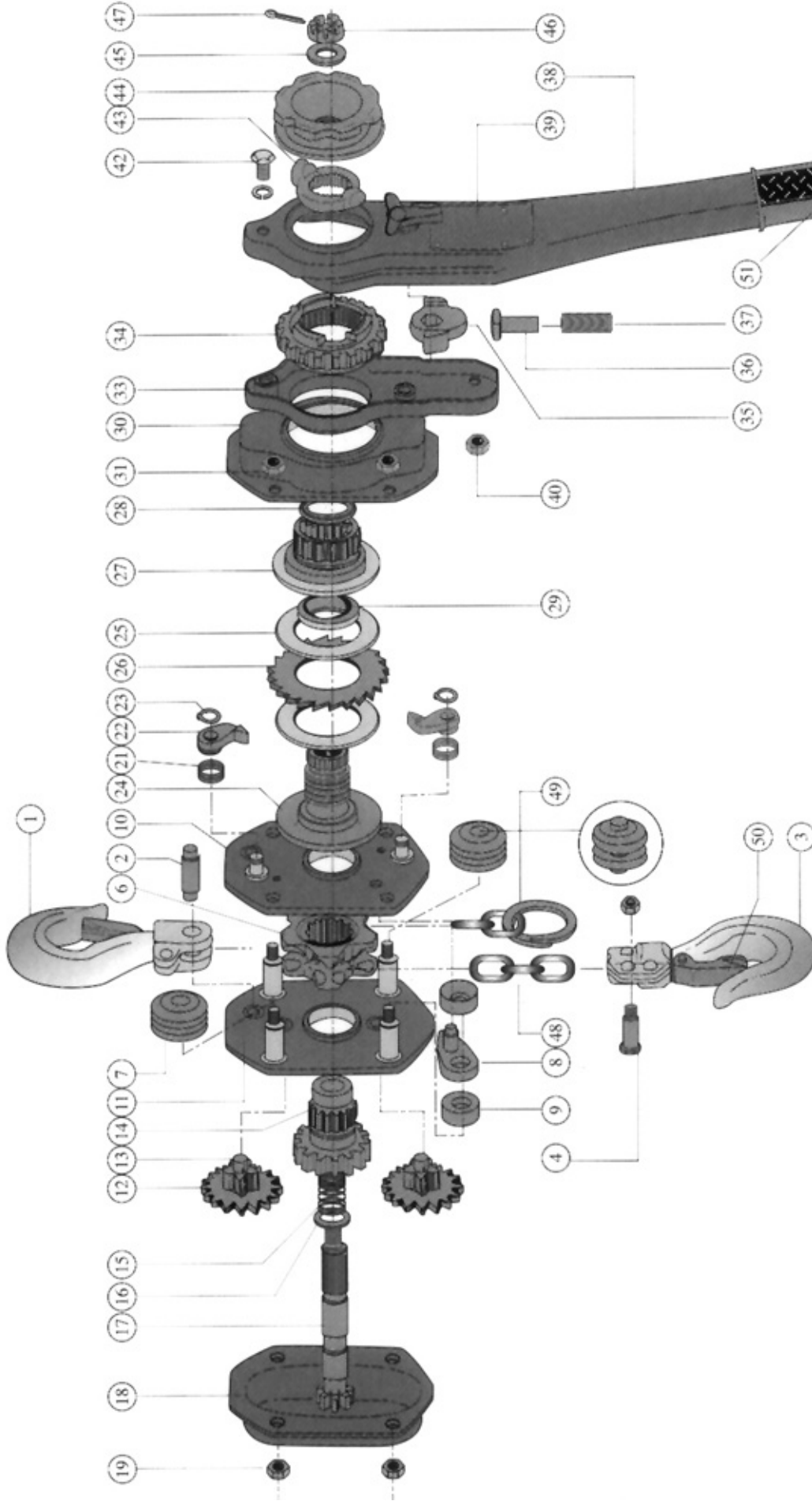


# FASTLIFT LEVER BLOCKS - MK 1



- |    |   |    |                        |    |                        |    |                     |
|----|---|----|------------------------|----|------------------------|----|---------------------|
| 1  | Top hook c/w safety latch                                 | 21 | Pawl spring            | 31 | Nut                    | 43 | Cam guide           |
| 2  | Top pin   | 22 | Pawl                   | 33 | Change over cover      | 44 | Free knob           |
| 3  | Bottom hook c/w safety latch                              | 23 | Snap ring for pawl     | 34 | Change over wheel      | 45 | Pinion shaft washer |
| 4  | Bolt & nut for load chain                                 | 24 | Disc hub               | 35 | Change-over pawl       | 46 | Pinion shaft nut    |
| 6  | Load sheave   | 25 | Friction plate         | 36 | Spring shaft           | 47 | Split pin           |
| 7  | Guide roller  | 26 | Ratchet                | 37 | Change-over spring     | 48 | Load chain          |
| 8  | Stripper collar   | 27 | Female thread assembly | 38 | Lever assembly         | 49 | Chain stopper link  |
| 9  | Stripper plate c/w pawl studs & load bush                 | 28 | Seal A                 | 39 | Nameplate & rivets     | 50 | Safety latch        |
| 10 | Brake side plate c/w pinion bushes                        | 29 | Seal B                 | 40 | Nut                    | 51 | Rubber handle grip  |
| 11 | Gear side plate c/w stay bolts, pinion bushes & load bush | 30 | Brake cover            | 42 | Hex head bolt & washer |    |                     |
| 12 | Pinion gear   |    |                        |    |                        |    |                     |
| 13 | Pinion  |    |                        |    |                        |    |                     |
| 14 | Load gear   |    |                        |    |                        |    |                     |
| 15 | Coil spring   |    |                        |    |                        |    |                     |
| 16 | Spring seat   |    |                        |    |                        |    |                     |
| 17 | Pinion shaft  |    |                        |    |                        |    |                     |
| 18 | Gear cover c/w pinion bushes                              |    |                        |    |                        |    |                     |
| 19 | Nut   |    |                        |    |                        |    |                     |